

Rampion 2 Wind Farm

Category 6: Environmental Statement

Volume 3, Chapter 25: Historic environment – Figures (Part 2 of 5)

Date: August 2023

Revision A

Document Reference: 6.3.25

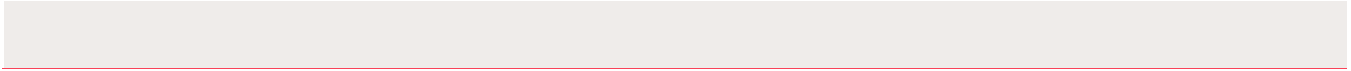
Pursuant to: APFP Regulations 5 (2) (a), 5 (2) (m)

Ecodoc number: 004884771-01



Document revisions

Revision	Date	Status/reason for issue	Author	Checked by	Approved by
A	04/08/2023	Final for DCO Application	WSP	RED	RED

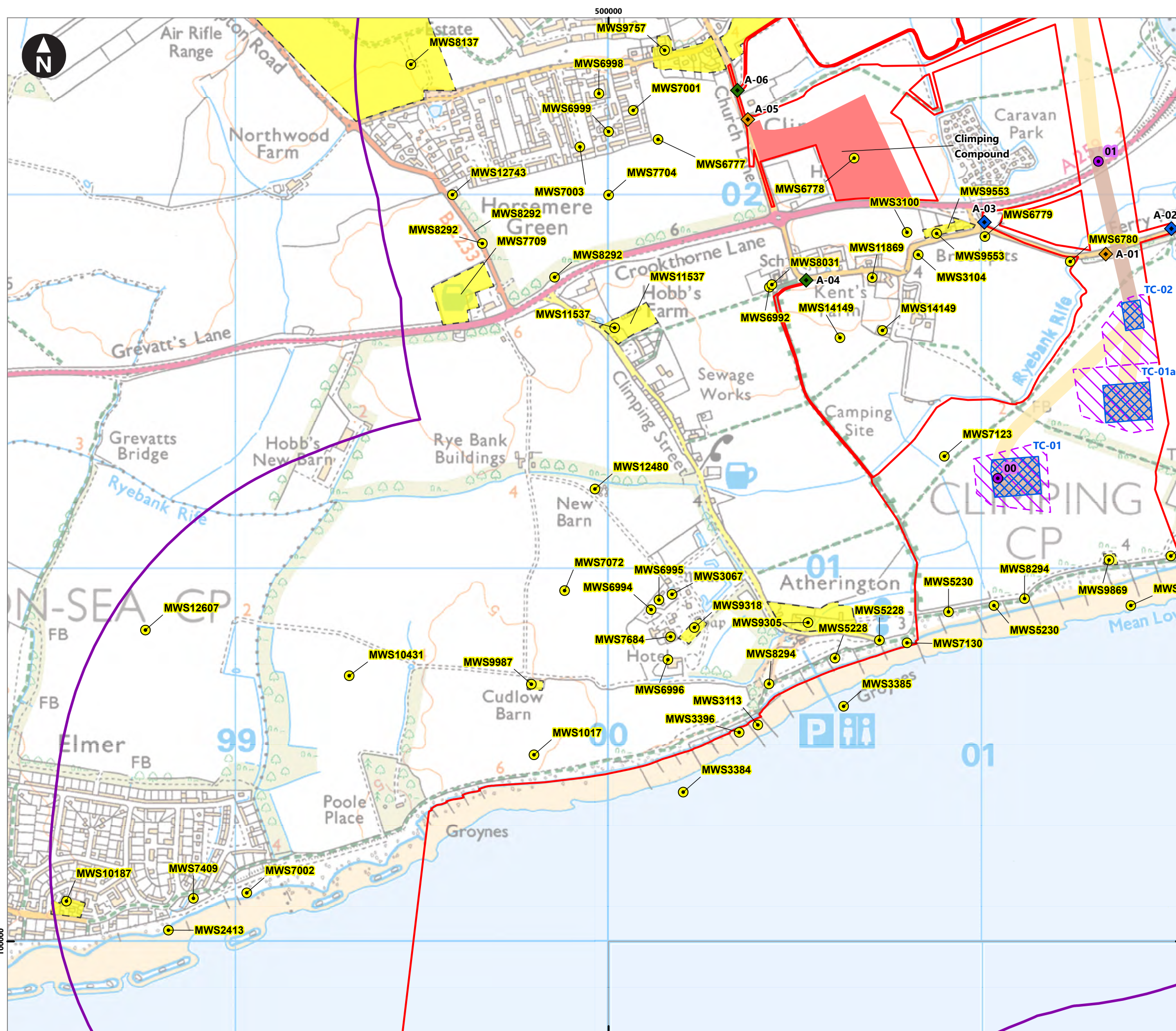


Contents

List of Figures

Figure number	Figure Title	APFP number	Ecodoc number	Revision	Revision Date	Document Part
Figure 25.1	ES Assessment Boundary	5 (2) (a)	004866435-01	A	04/08/2023	Part 1 of 5
Figure 25.2a-h	Designated heritage assets within Study Area	5 (2) (m)	004866436-01	A	04/08/2023	Part 1 of 5
Figure 25.3a-x	HER monument records and UKHO wreck sites	5 (2) (m)	004866437-01	A	04/08/2023	Part 2 of 5
Figure 25.4a-h	Archaeological Notification Areas and features identified by remote sensing (LiDAR and aerial photographs) and historic maps	5 (2) (m)	004866438-01	A	04/08/2023	Part 3 of 5
Figure 25.5a-h	Designated heritage assets assessed for effects through change to setting from onshore development	5 (2) (m)	004866439-01	A	04/08/2023	Part 3 of 5
Figure 25.6a-h	Designated heritage assets with onshore cable corridor and ZTV	5 (2) (a)	004866440-01	A	04/08/2023	Part 4 of 5

Figure number	Figure Title	APFP number	Ecodoc number	Revision	Revision Date	Document Part
Figure 25.7a-c	Designated heritage assets with onshore substation and ZTV	5 (2) (a)	004891443-01	A	04/08/2023	Part 4 of 5
Figure 25.8a-c	Designated heritage assets with Bolney substation extension and ZTV	5 (2) (a)	004891444-01	A	04/08/2023	Part 4 of 5
Figure 25.9a-g	Designated heritage assets assessed for effects through change to setting from offshore development	5 (2) (a)	004891445-01	A	04/08/2023	Part 5 of 5
Figure 25.10a-g	Designated heritage assets assessed for effects through change to setting from offshore development and ZTV	5 (2) (a)	004891446-01	A	04/08/2023	Part 5 of 5
Figure 25.11	Historic environment Zone of Influence	5 (2) (a)	004891447-01	A	04/08/2023	Part 5 of 5



Key

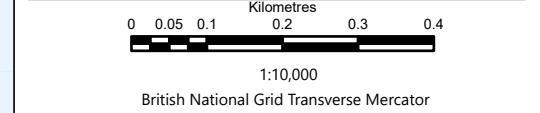
- Proposed DCO Order Limits
- 1km Study Area
- Bolney Substation extension (AIS)
- Bolney Substation extension (GIS)
- Existing National Grid Substation
- Oakendene substation site
- Temporary construction compound
- Trenchless Crossing (TC) compounds
- Trenchless Crossing (TC) compound alternatives
- Trenchless Crossing (TC) limits of deviation

Proposed onshore cable construction corridor

- Indicative trenchless section
- Indicative open cut section

Access from public highway

- ◆ Construction
- ◆ Construction & operational
- ◆ Light construction
- ◆ Light construction & operational
- ◆ Operational
- HER monument record (point)
- HER monument record (line)
- HER monument record (polygon)



Rampion Extension Development

Rampion 2 Offshore Wind Farm

Figure 25.3a HER monument records and UKHO wreck sites

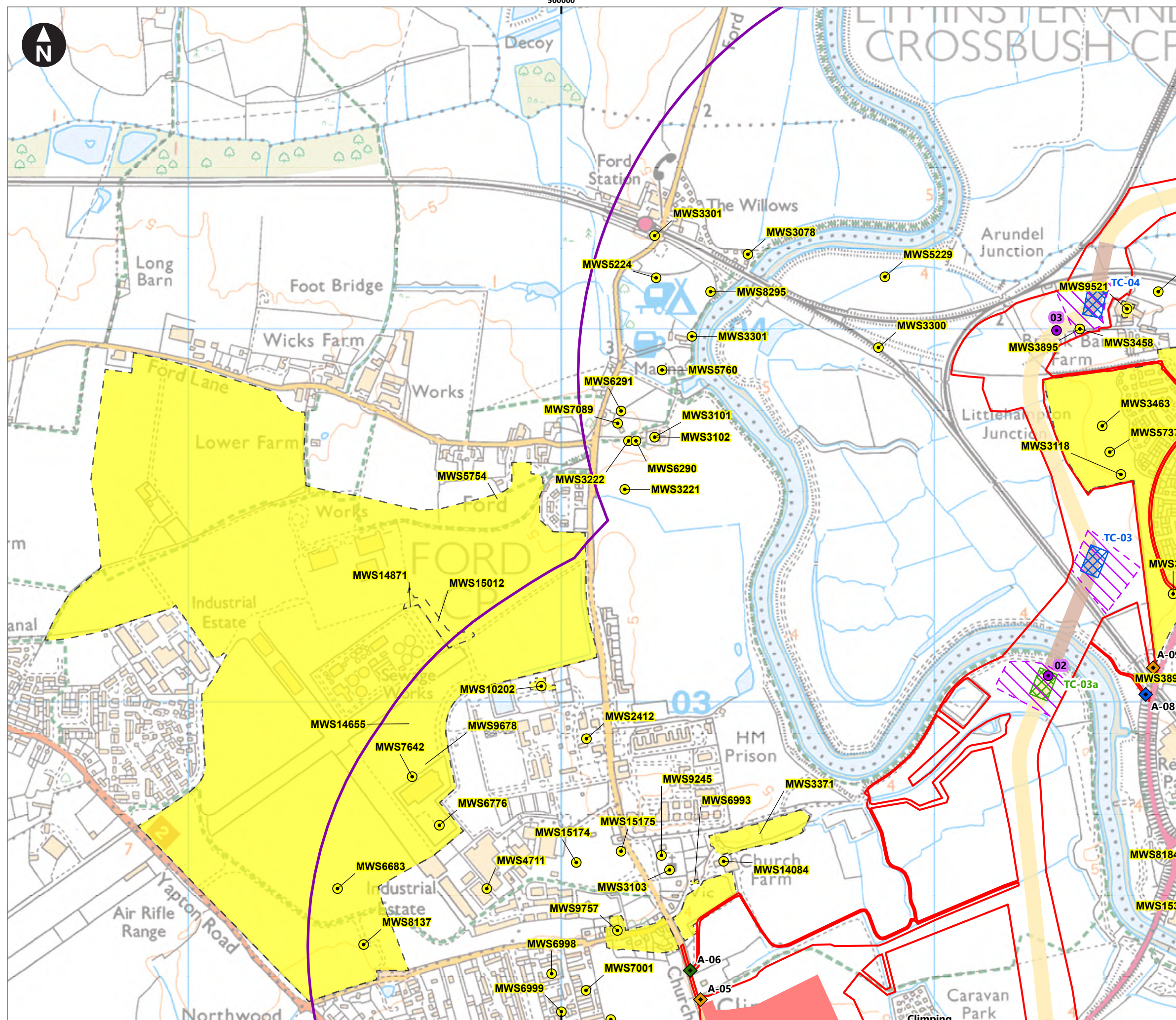
Environmental Statement

System Identifier: 42285-WSP-ES-ON-FG-OH-2215 Version: 1.0

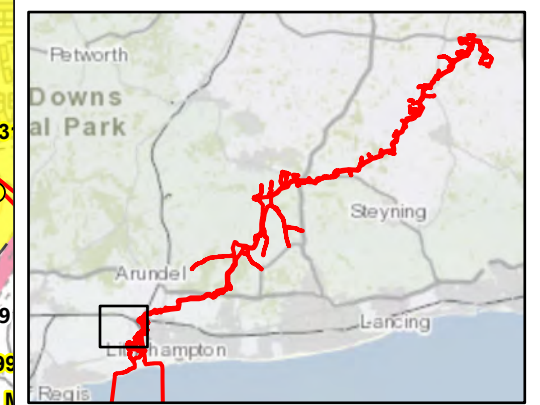
Company: WSP	Drawn By: SHEPS	Chk/Prvd: ASTBD	Drawn Date: 25/07/2023	Status: DRAFT
--------------	-----------------	-----------------	------------------------	---------------

500000

Service Layer Credits: Contains OS data © Crown Copyright and database rights 2023
© Crown copyright and database rights 2023 Ordnance Survey 0100031673



- Key**
- Proposed DCO Order Limits
 - 1km Study Area
 - Bolney Substation extension (AIS)
 - Bolney Substation extension (GIS)
 - Existing National Grid Substation
 - Oakdene substation site
 - Temporary construction compound
 - Trenchless Crossing (TC) compounds
 - Trenchless Crossing (TC) compound alternatives
 - Trenchless Crossing (TC) limits of deviation
- Proposed onshore cable construction corridor**
- Indicative trenchless section
 - Indicative open cut section
- Access from public highway**
- Construction
 - Construction & operational
 - Light construction
 - Light construction & operational
 - Operational
 - HER monument record (point)
 - HER monument record (line)
 - HER monument record (polygon)



0 0.05 0.1 0.2 0.3 0.4
Kilometres
1:10,000
British National Grid Transverse Mercator

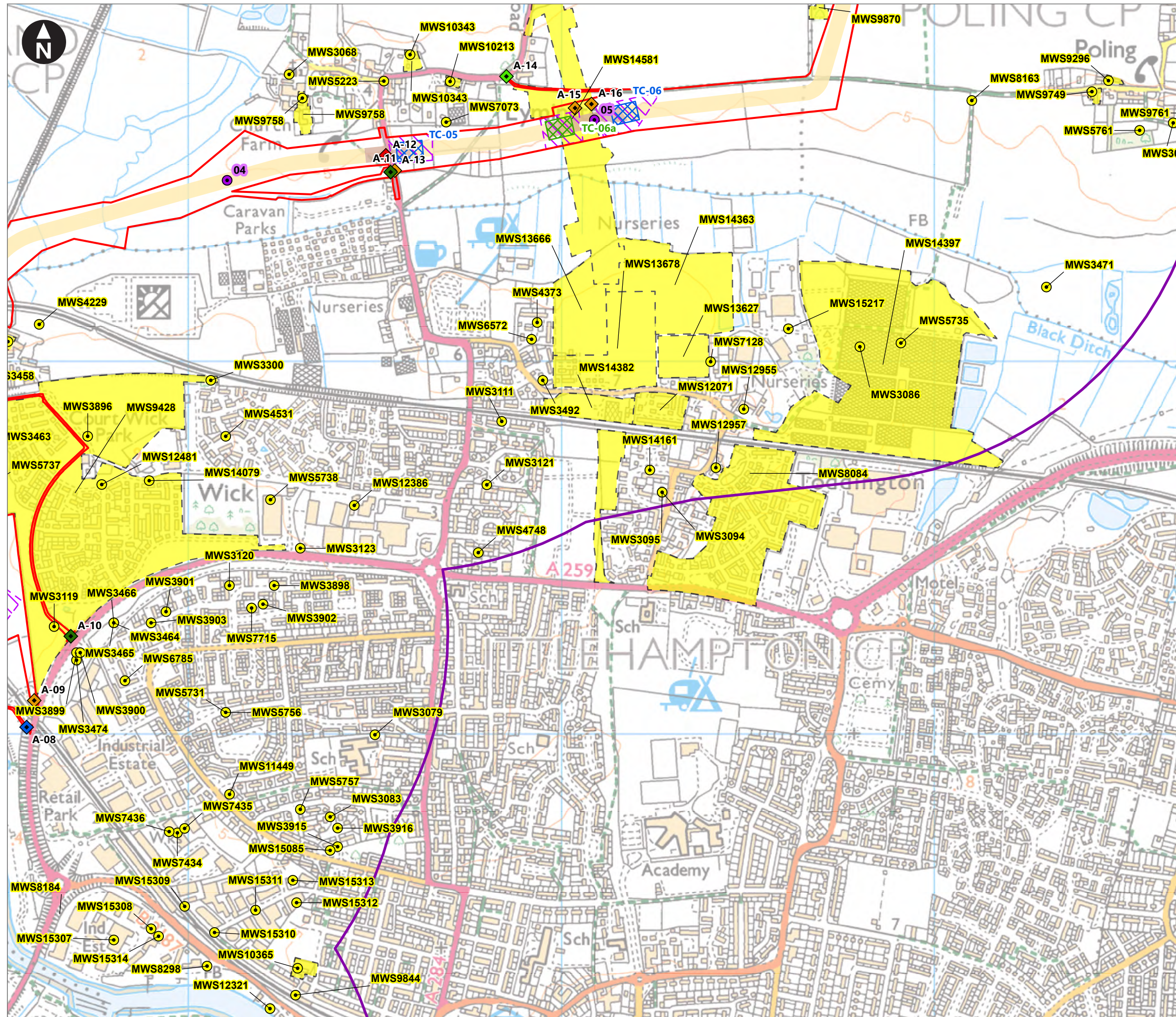


Rampion 2 Offshore Wind Farm
Figure 25.3c HER monument records and UKHO wreck sites

Environmental Statement

System Identifier: 42285-WSP-ES-ON-FG-OH-2215
Version: 1.0

Company: WSP
Drawn By: SHEPS
Chk/Prvd: ASTBD
Drawn Date: 25/07/2023
Status: DRAFT



Key

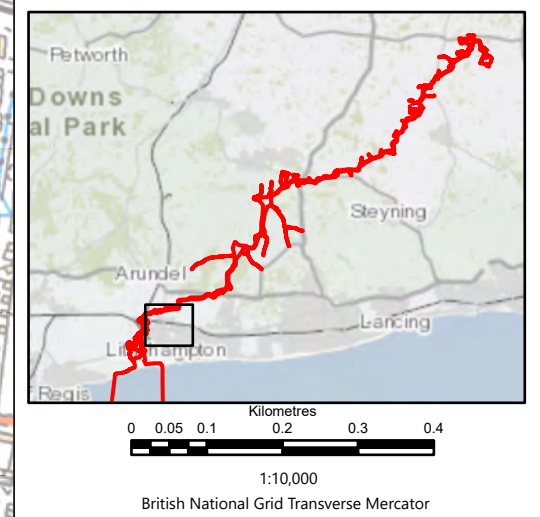
- Proposed DCO Order Limits
- 1km Study Area
- Bolney Substation extension (AIS)
- Bolney Substation extension (GIS)
- Existing National Grid Substation
- Oakendene substation site
- Temporary construction compound
- Trenchless Crossing (TC) compounds
- Trenchless Crossing (TC) compound alternatives
- Trenchless Crossing (TC) limits of deviation

Proposed onshore cable construction corridor

- Indicative trenchless section
- Indicative open cut section

Access from public highway

- ◆ Construction
- ◆ Construction & operational
- ◆ Light construction
- ◆ Light construction & operational
- ◆ Operational
- HER monument record (point)
- HER monument record (line)
- HER monument record (polygon)



Rampion Extension Development

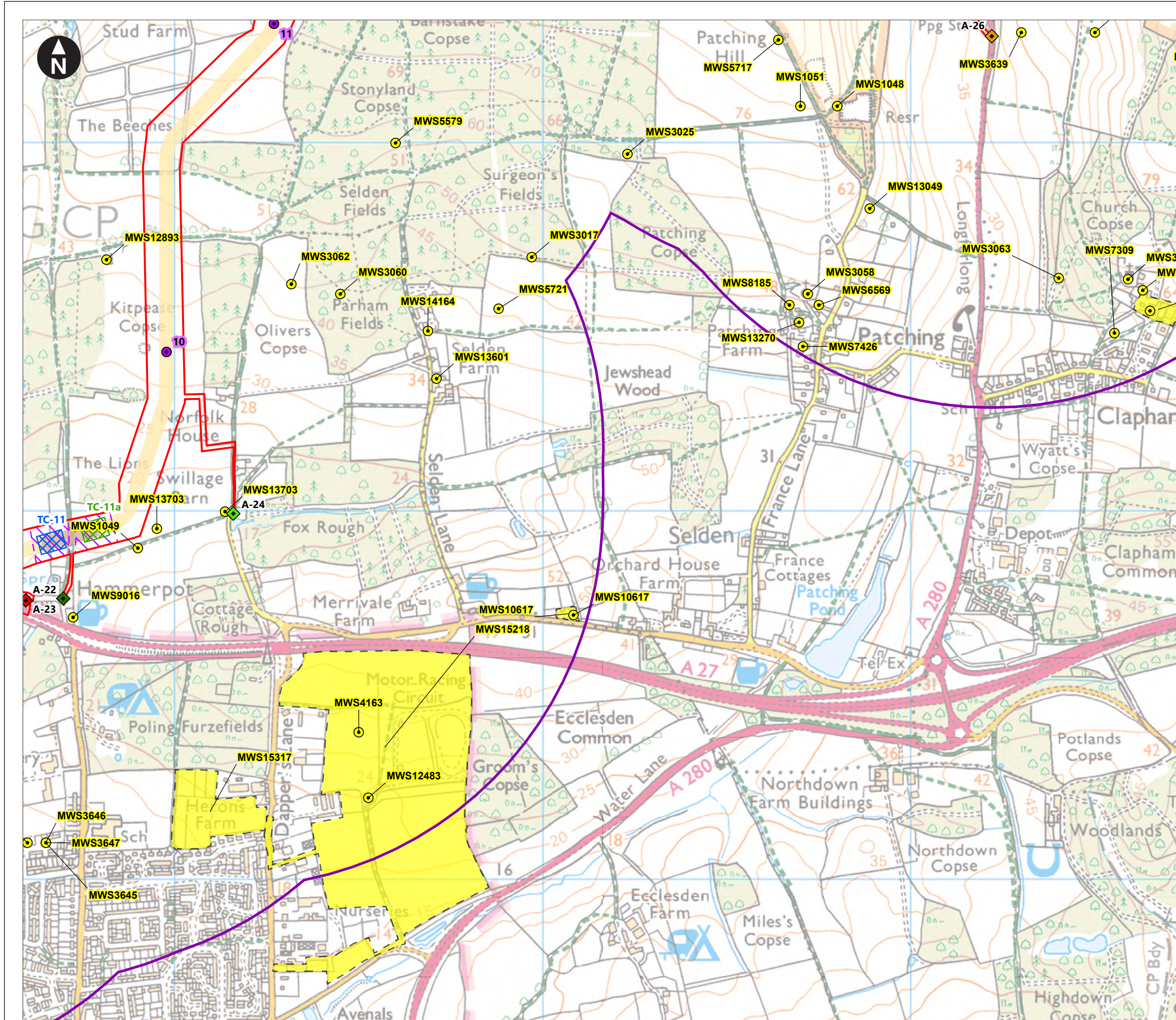


Rampion 2 Offshore Wind Farm

Figure 25.3d HER monument records and UKHO wreck sites

Environmental Statement

System Identifier: 42285-WSP-ES-ON-FG-OH-2215		Version: 1.0
Company: WSP	Drawn By: SHEPS	Chk/Prvd: ASTBD
Drawn Date: 25/07/2023	Status: DRAFT	



Key

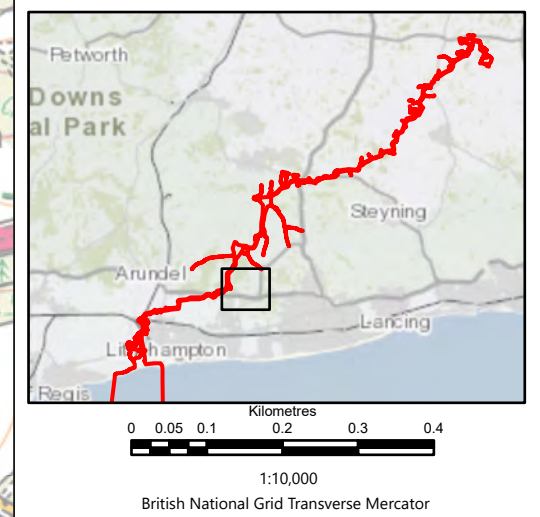
- Proposed DCO Order Limits
- 1km Study Area
- Bolney Substation extension (AIS)
- Bolney Substation extension (GIS)
- Existing National Grid Substation
- Oakendene substation site
- Temporary construction compound
- Trenchless Crossing (TC) compounds
- Trenchless Crossing (TC) compound alternatives
- Trenchless Crossing (TC) limits of deviation

Proposed onshore cable construction corridor

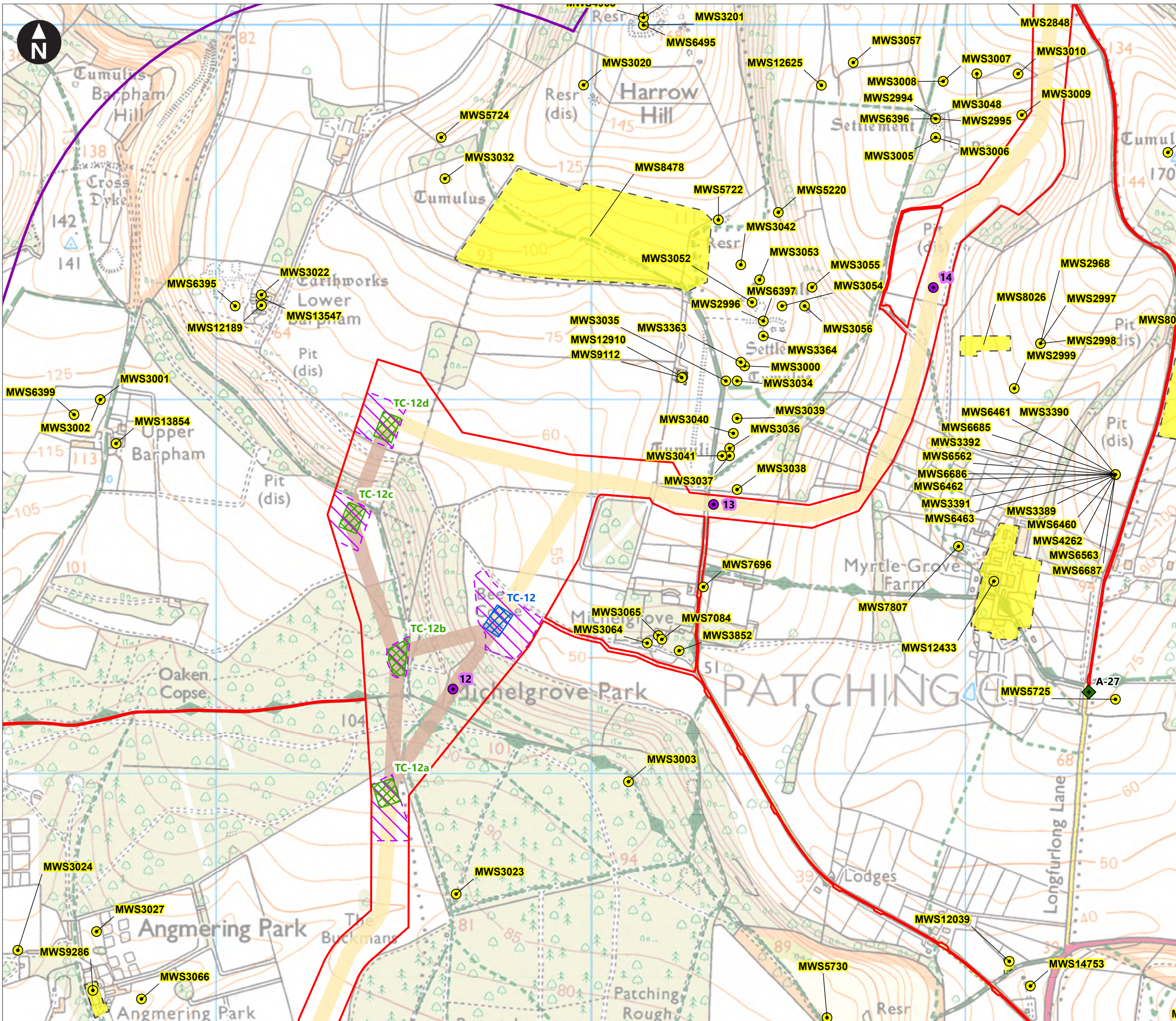
- Indicative trenchless section
- Indicative open cut section

Access from public highway

- ◆ Construction
- ◆ Construction & operational
- ◆ Light construction
- ◆ Light construction & operational
- ◆ Operational
- HER monument record (point)
- HER monument record (line)
- HER monument record (polygon)



Rampion Extension Development				
Rampion 2 Offshore Wind Farm				
Figure 25.3h HER monument records and UKHO wreck sites				
Environmental Statement				
System Identifier: 42285-WSP-ES-ON-FG-OH-2215				Version: 1.0
Company: WSP	Drawn By: SHEPS	Chk/Prvrd: ASTBD	Drawn Date: 25/07/2023	Status: DRAFT



Key

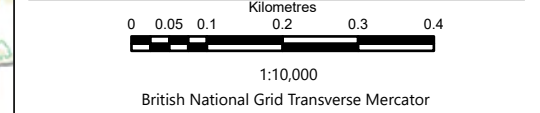
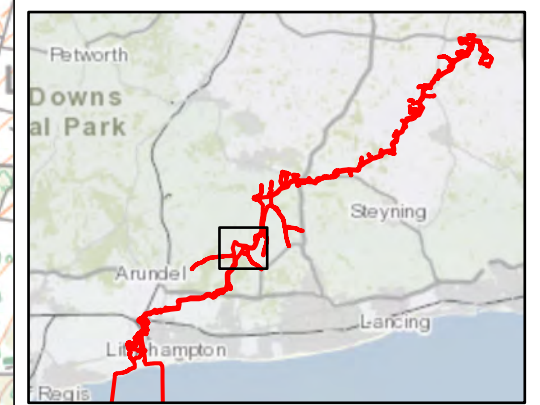
- Proposed DCO Order Limits
- 1km Study Area
- Bolney Substation extension (AIS)
- Bolney Substation extension (GIS)
- Existing National Grid Substation
- Oakendene substation site
- Temporary construction compound
- Trenchless Crossing (TC) compounds
- Trenchless Crossing (TC) compound alternatives
- Trenchless Crossing (TC) limits of deviation

Proposed onshore cable construction corridor

- Indicative trenchless section
- Indicative open cut section

Access from public highway

- ◆ Construction
- ◆ Construction & operational
- ◆ Light construction
- ◆ Light construction & operational
- ◆ Operational
- HER monument record (point)
- HER monument record (line)
- HER monument record (polygon)



Rampion Extension Development

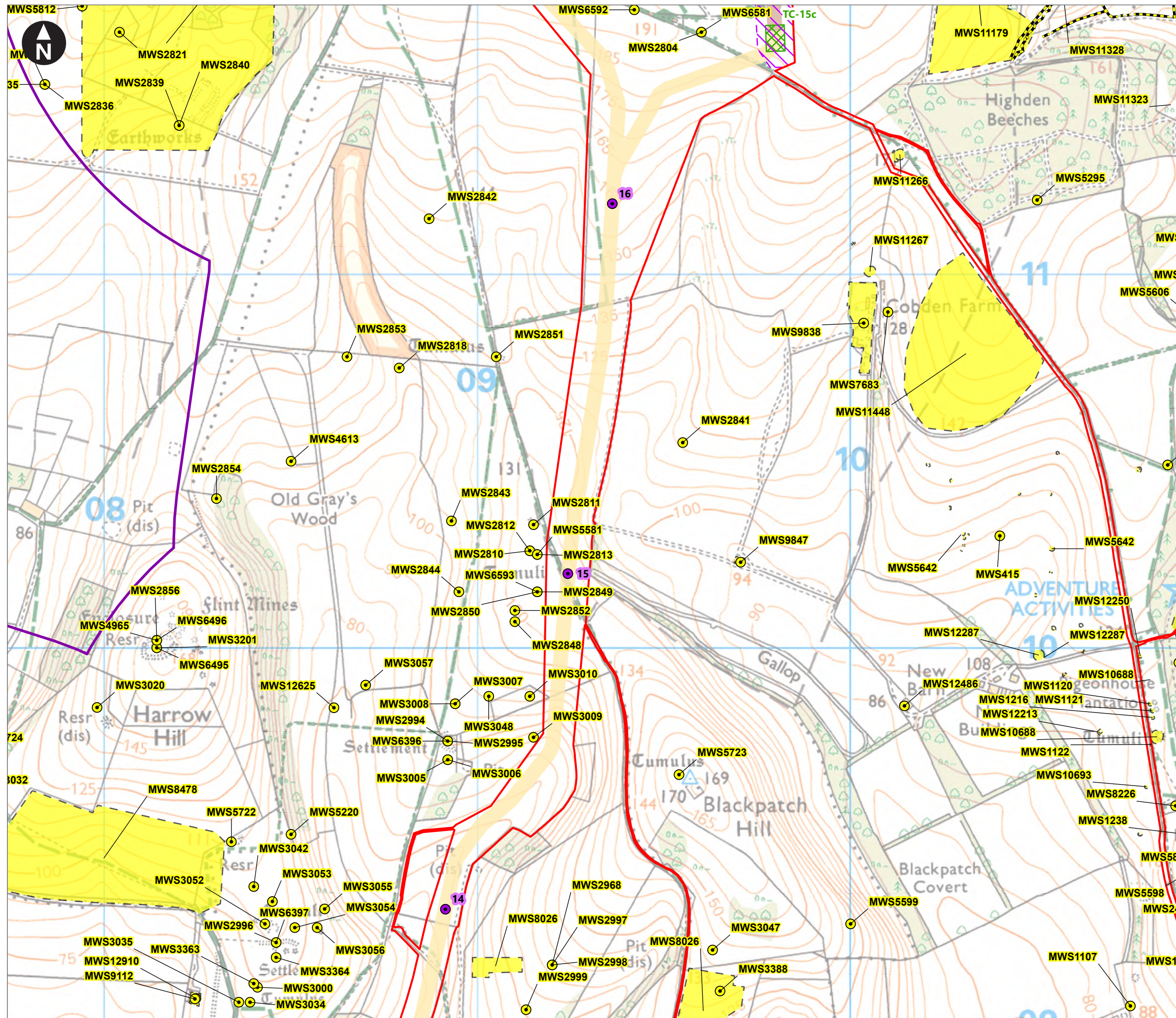
Rampion 2 Offshore Wind Farm

Figure 25.3i HER monument records and UKHO wreck sites

Environmental Statement

System Identifier: 42285-WSP-ES-ON-FG-OH-2215 Version: 1.0

Company: WSP	Drawn By: SHEPS	Chk/Prvd: ASTBD	Drawn Date: 25/07/2023	Status: DRAFT
--------------	-----------------	-----------------	------------------------	---------------



Key

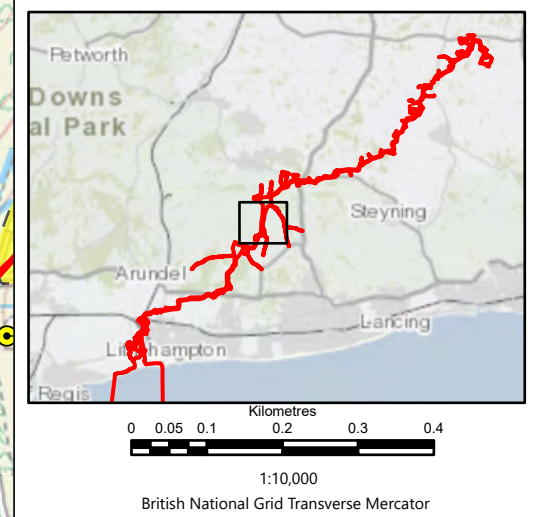
- Proposed DCO Order Limits
- 1km Study Area
- Bolney Substation extension (AIS)
- Bolney Substation extension (GIS)
- Existing National Grid Substation
- Oakendene substation site
- Temporary construction compound
- Trenchless Crossing (TC) compounds
- Trenchless Crossing (TC) compound alternatives
- Trenchless Crossing (TC) limits of deviation

Proposed onshore cable construction corridor

- Indicative trenchless section
- Indicative open cut section

Access from public highway

- ◆ Construction
- ◆ Construction & operational
- ◆ Light construction
- ◆ Light construction & operational
- ◆ Operational
- HER monument record (point)
- HER monument record (line)
- HER monument record (polygon)



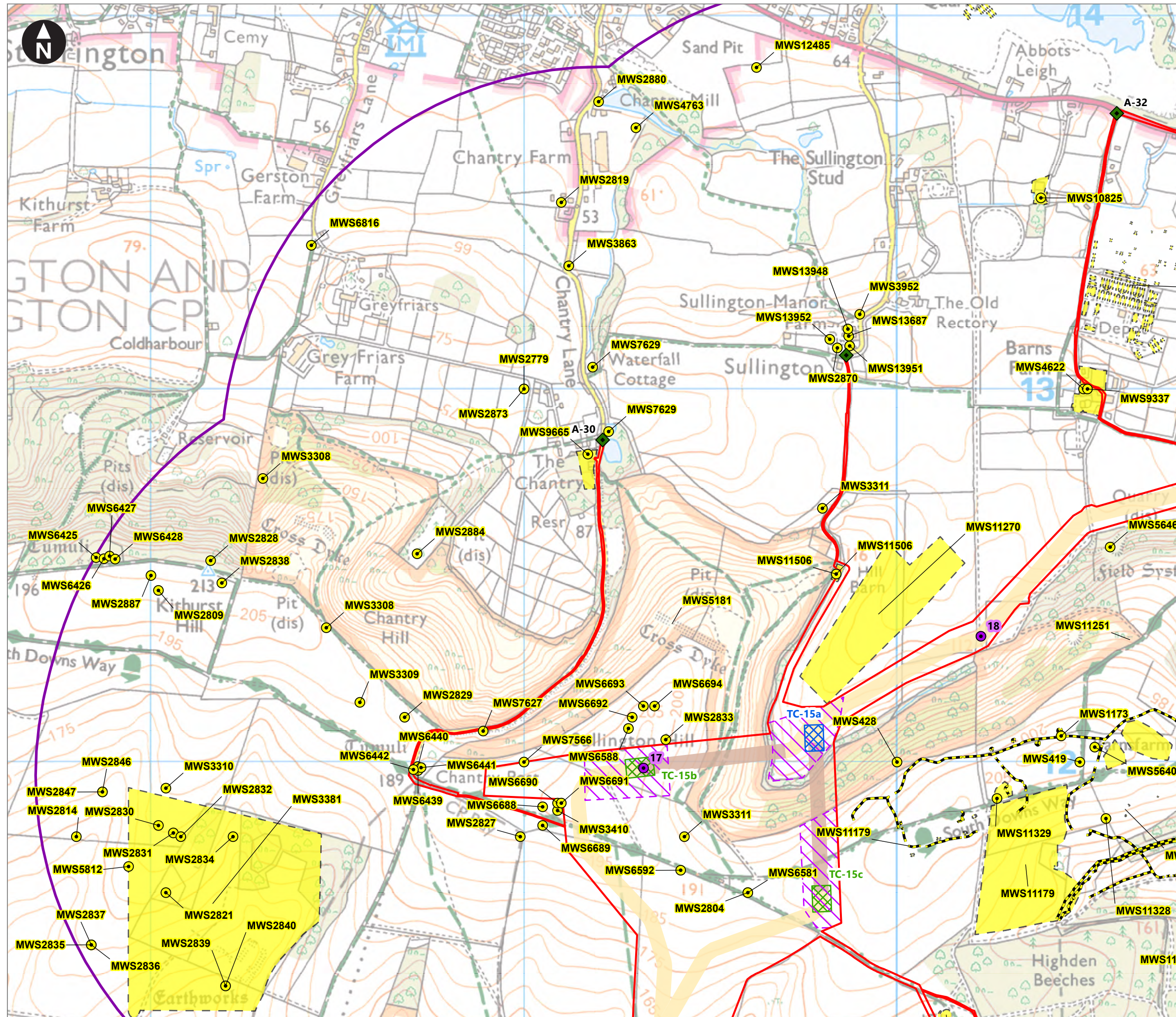
Rampion Extension Development

Rampion 2 Offshore Wind Farm

Figure 25.31 HER monument records and UKHO wreck sites

Environmental Statement

System Identifier: 42285-WSP-ES-ON-FG-OH-2215		Version: 1.0
Company: WSP	Drawn By: SHEPS	Chk/Prvrd: ASTBD
Drawn Date: 25/07/2023	Status: DRAFT	



Key

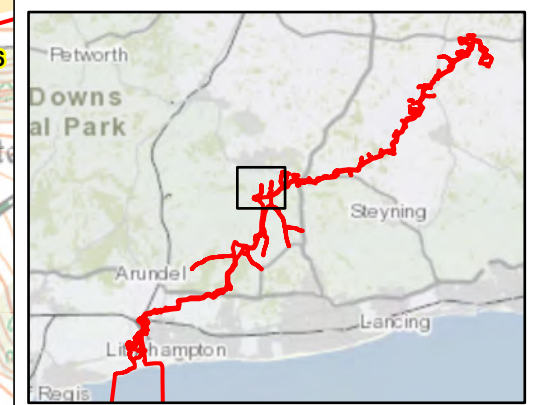
- Proposed DCO Order Limits
- 1km Study Area
- Bolney Substation extension (AIS)
- Bolney Substation extension (GIS)
- Existing National Grid Substation
- Oakendene substation site
- Temporary construction compound
- Trenchless Crossing (TC) compounds
- Trenchless Crossing (TC) compound alternatives
- Trenchless Crossing (TC) limits of deviation

Proposed onshore cable construction corridor


- Indicative trenchless section
- Indicative open cut section

Access from public highway

- ◆ Construction
- ◆ Construction & operational
- ◆ Light construction
- ◆ Light construction & operational
- ◆ Operational
- HER monument record (point)
- HER monument record (line)
- HER monument record (polygon)



Rampion Extension Development

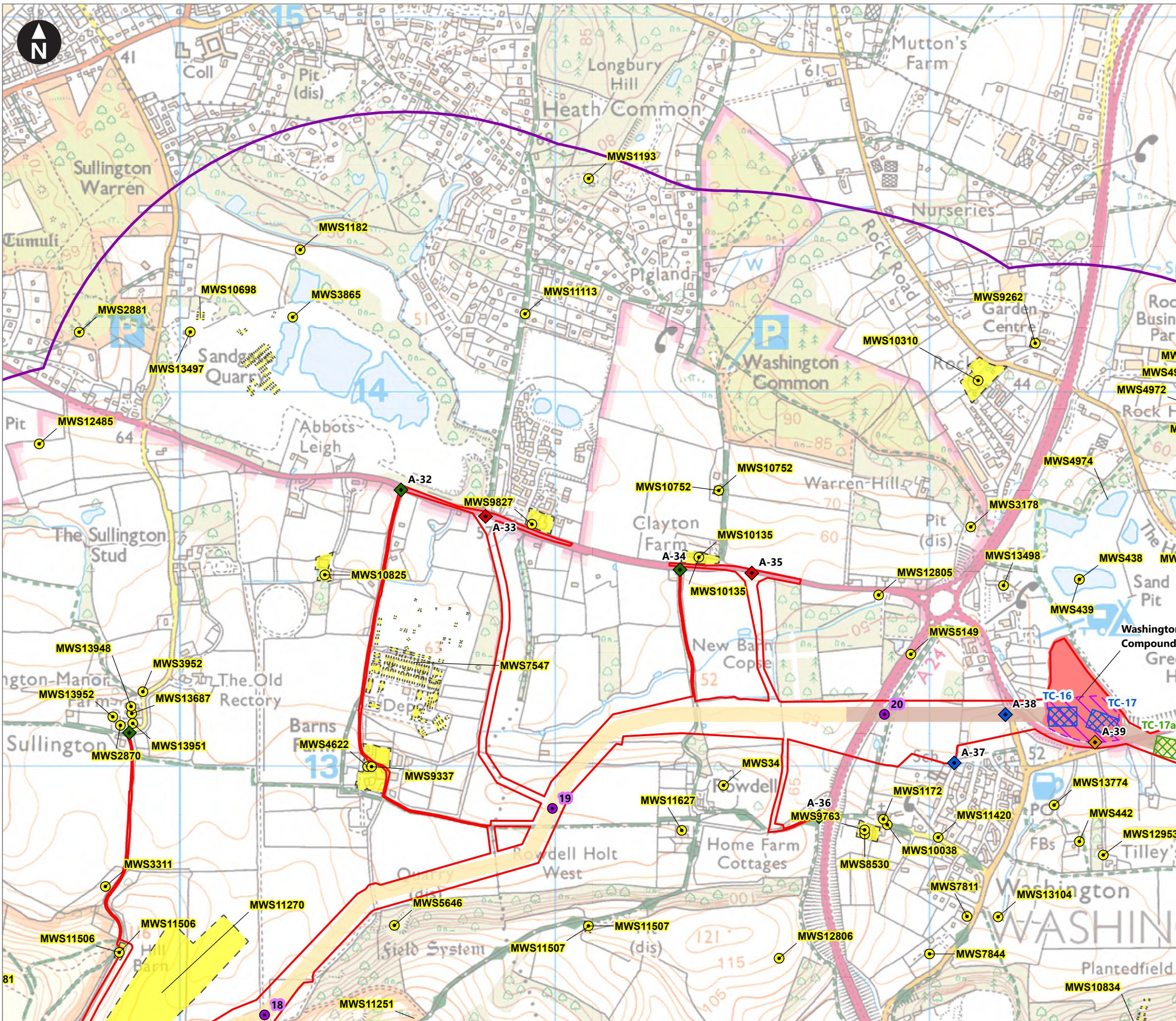


Rampion 2 Offshore Wind Farm

Figure 25.3m HER monument records and UKHO wreck sites

Environmental Statement

System Identifier: 42285-WSP-ES-ON-FG-OH-2215		Version: 1.0
Company: WSP	Drawn By: SHEPS	Chk/Prvrd: ASTBD
Drawn Date: 25/07/2023	Status: DRAFT	



Key

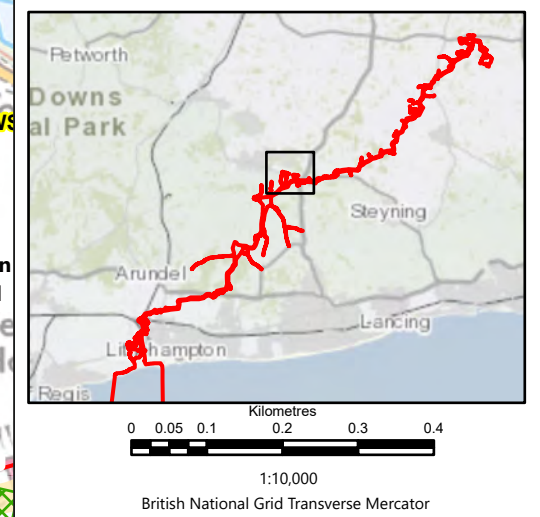
- Proposed DCO Order Limits
- 1km Study Area
- Bolney Substation extension (AIS)
- Bolney Substation extension (GIS)
- Existing National Grid Substation
- Oakendene substation site
- Temporary construction compound
- Trenchless Crossing (TC) compounds
- Trenchless Crossing (TC) compound alternatives
- Trenchless Crossing (TC) limits of deviation

Proposed onshore cable construction corridor

- Indicative trenchless section
- Indicative open cut section

Access from public highway

- ◆ Construction
- ◆ Construction & operational
- ◆ Light construction
- ◆ Light construction & operational
- ◆ Operational
- HER monument record (point)
- HER monument record (line)
- HER monument record (polygon)



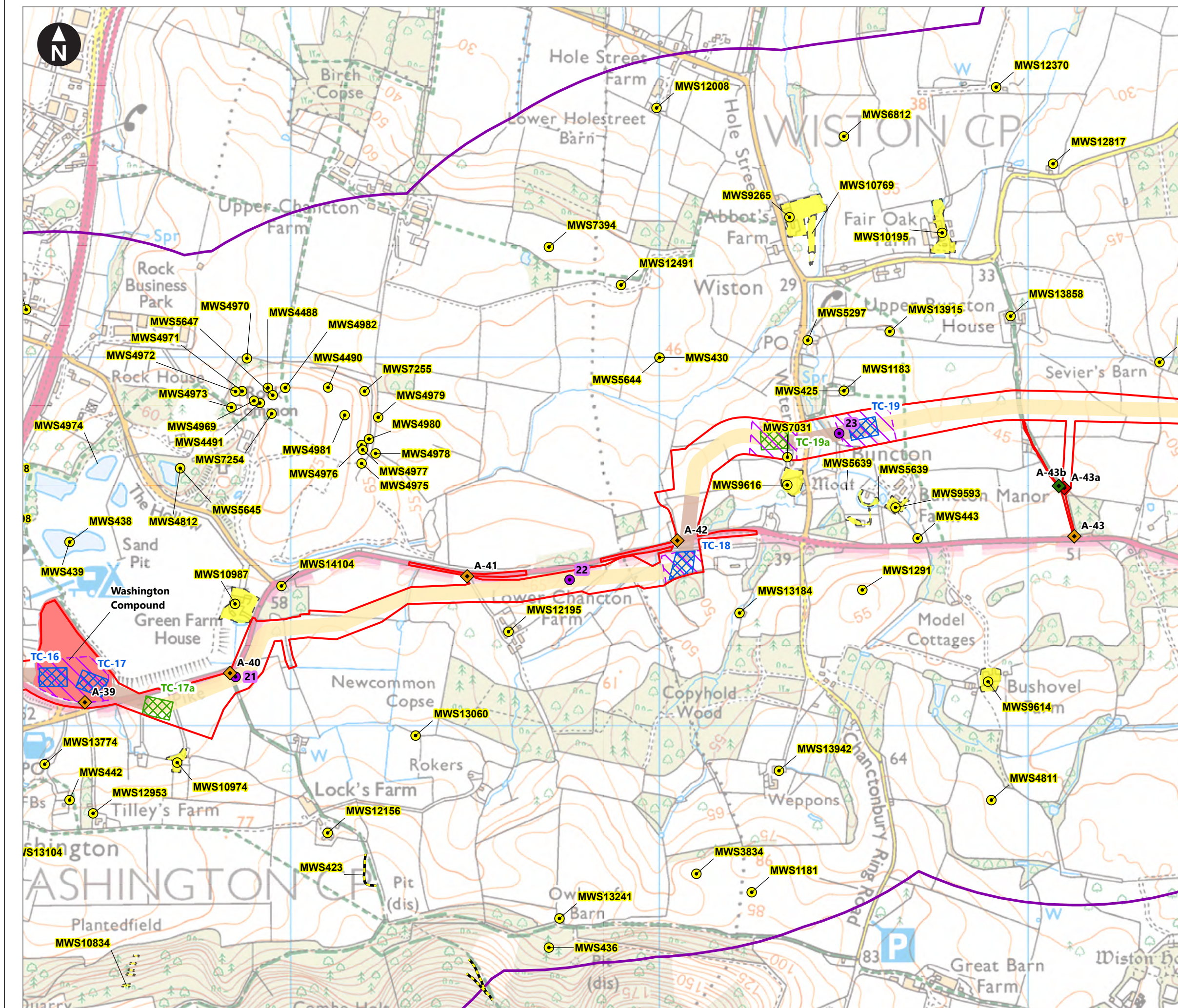
Rampion Extension Development

Rampion 2 Offshore Wind Farm

Figure 25.3o HER monument records and UKHO wreck sites

Environmental Statement

System Identifier: 42285-WSP-ES-ON-FG-OH-2215		Version: 1.0
Company: WSP	Drawn By: SHEPS	Chk/Prvrd: ASTBD
Drawn Date: 25/07/2023	Status: DRAFT	



Key

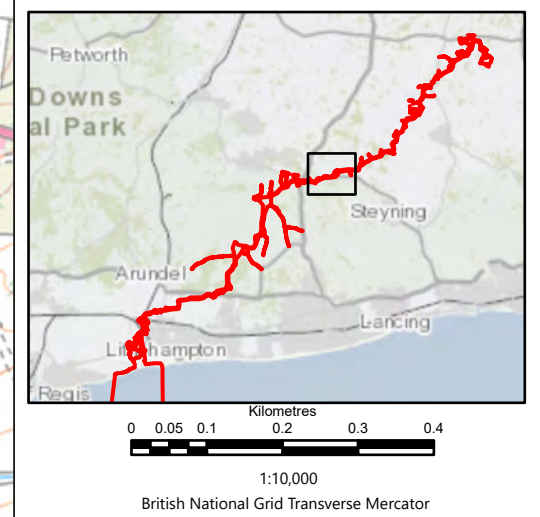
- Proposed DCO Order Limits
- 1km Study Area
- Bolney Substation extension (AIS)
- Bolney Substation extension (GIS)
- Existing National Grid Substation
- Oakdene substation site
- Temporary construction compound
- Trenchless Crossing (TC) compounds
- Trenchless Crossing (TC) compound alternatives
- Trenchless Crossing (TC) limits of deviation

Proposed onshore cable construction corridor

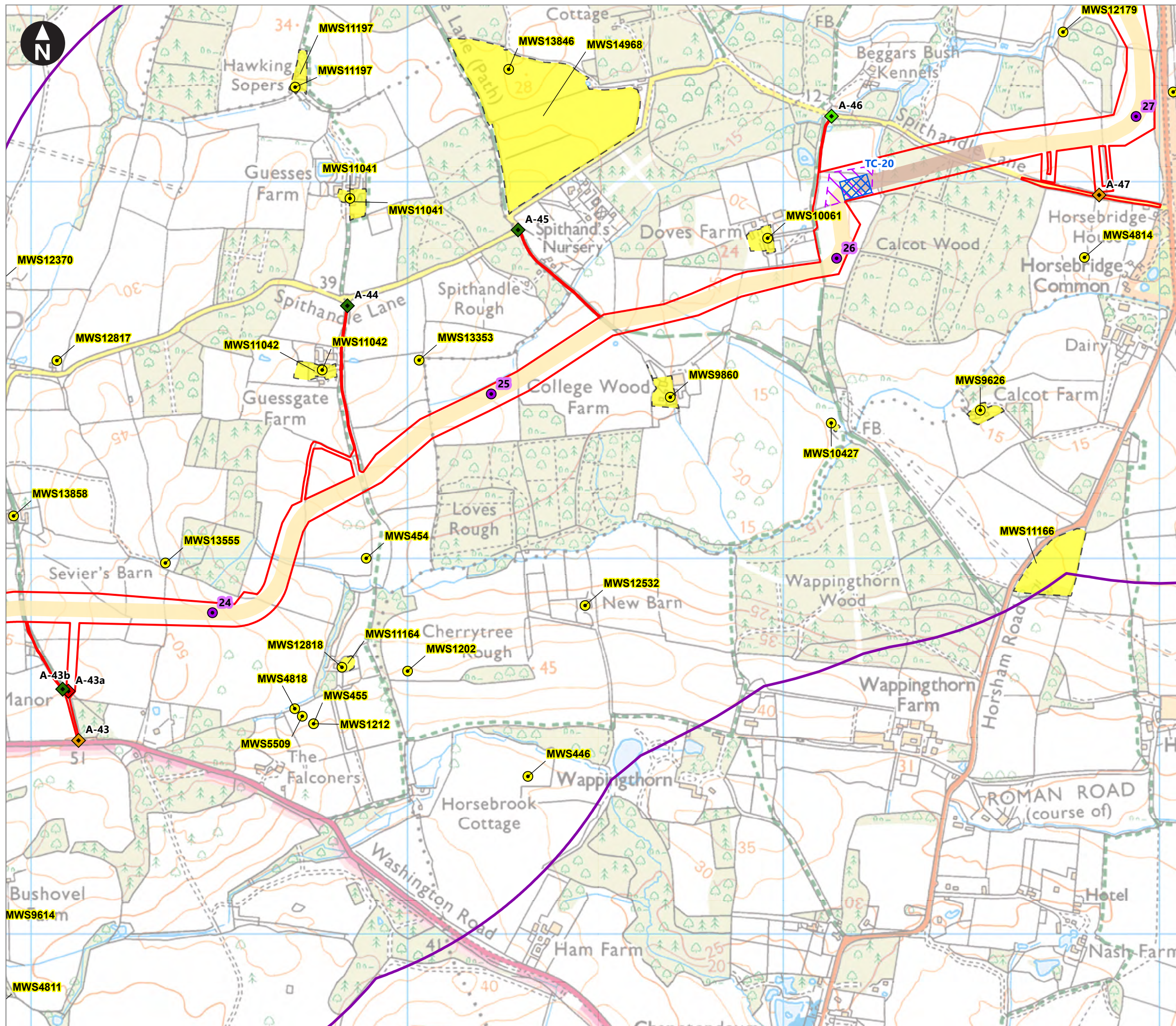
- Indicative trenchless section
- Indicative open cut section

Access from public highway

- ◆ Construction
- ◆ Construction & operational
- ◆ Light construction
- ◆ Light construction & operational
- ◆ Operational
- HER monument record (point)
- HER monument record (line)
- HER monument record (polygon)



Rampion Extension Development				
Rampion 2 Offshore Wind Farm				
Figure 25.3p HER monument records and UKHO wreck sites				
Environmental Statement				
System Identifier: 42285-WSP-ES-ON-FG-OH-2215				Version: 1.0
Company: WSP	Drawn By: SHEPS	Chk/Prvrd: ASTBD	Drawn Date: 25/07/2023	Status: DRAFT



Key

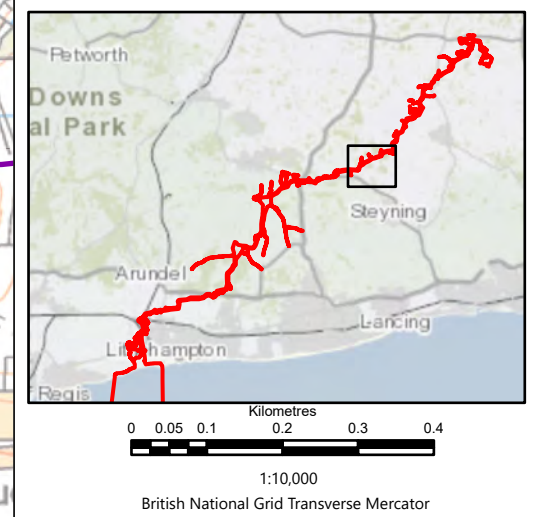
- Proposed DCO Order Limits
- 1km Study Area
- Bolney Substation extension (AIS)
- Bolney Substation extension (GIS)
- Existing National Grid Substation
- Oakendene substation site
- Temporary construction compound
- Trenchless Crossing (TC) compounds
- Trenchless Crossing (TC) compound alternatives
- Trenchless Crossing (TC) limits of deviation

Proposed onshore cable construction corridor

- Indicative trenchless section
- Indicative open cut section

Access from public highway

- ◆ Construction
- ◆ Construction & operational
- ◆ Light construction
- ◆ Light construction & operational
- ◆ Operational
- HER monument record (point)
- HER monument record (line)
- HER monument record (polygon)



Rampion Extension Development

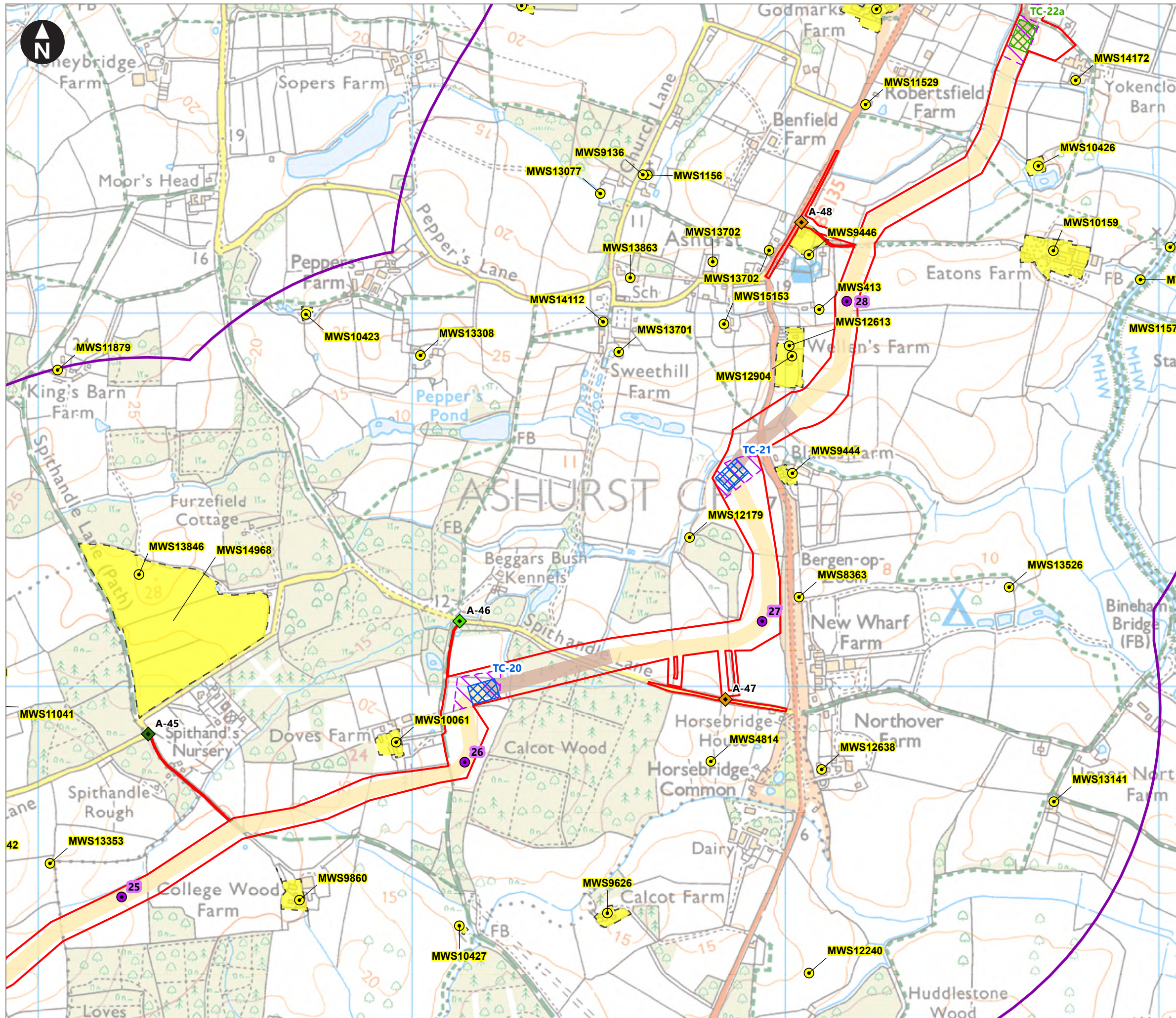


Rampion 2 Offshore Wind Farm

Figure 25.3q HER monument records and UKHO wreck sites

Environmental Statement

System Identifier: 42285-WSPE-ES-ON-FG-OH-2215		Version: 1.0
Company: WSP	Drawn By: SHEPS	Chk/Prvrd: ASTBD
Drawn Date: 25/07/2023	Status: DRAFT	



Key

- Proposed DCO Order Limits
- 1km Study Area
- Bolney Substation extension (AIS)
- Bolney Substation extension (GIS)
- Existing National Grid Substation
- Oakendene substation site
- Temporary construction compound
- Trenchless Crossing (TC) compounds
- Trenchless Crossing (TC) compound alternatives
- Trenchless Crossing (TC) limits of deviation

Proposed onshore cable construction corridor

- Indicative trenchless section
- Indicative open cut section

Access from public highway

- Construction
- Construction & operational
- Light construction
- Light construction & operational
- Operational
- HER monument record (point)
- HER monument record (line)
- HER monument record (polygon)



Rampion Extension Development



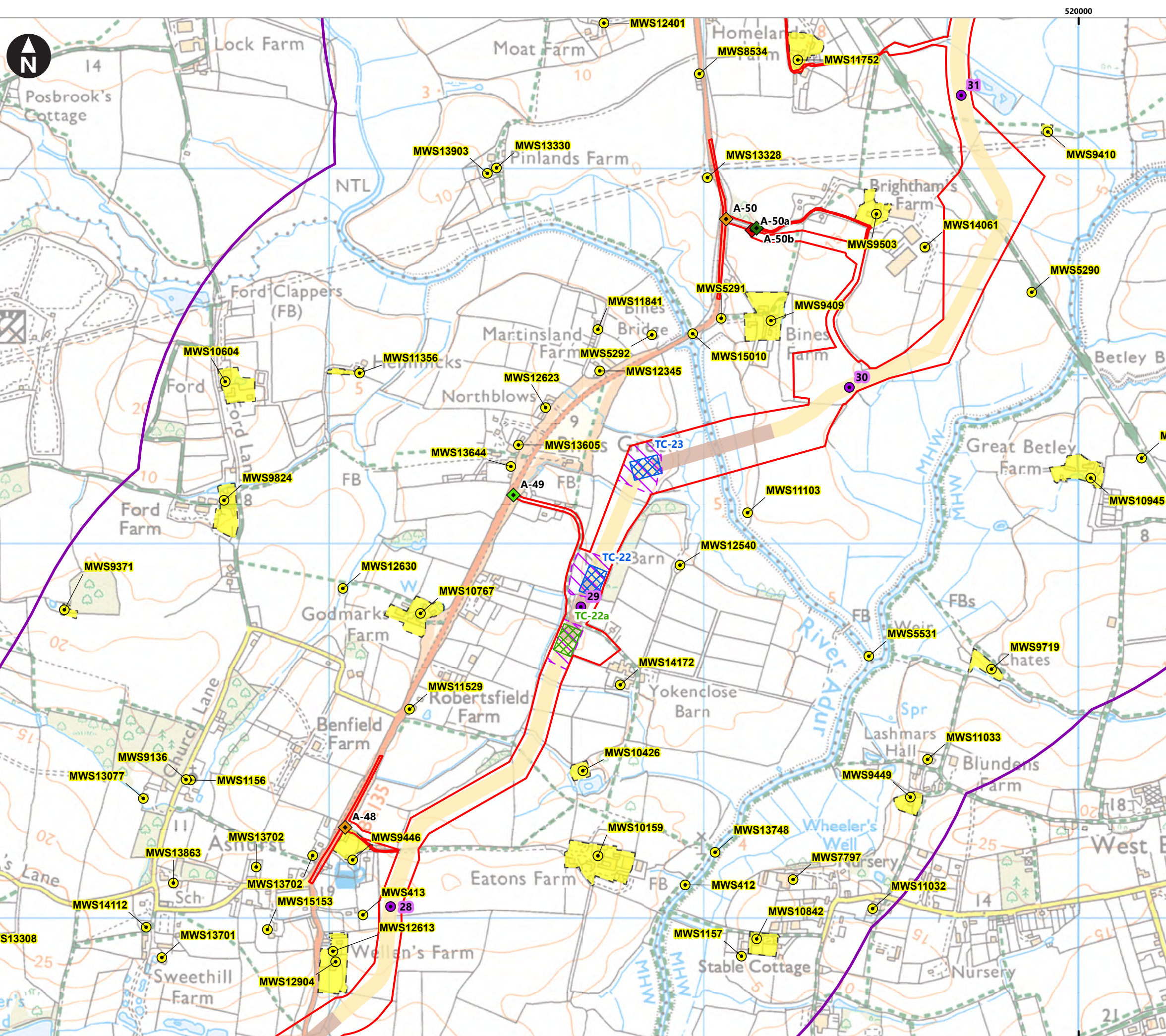
Rampion 2 Offshore Wind Farm

Figure 25.3r HER monument records and UKHO wreck sites

Environmental Statement

System Identifier: 42285-WSP-ES-ON-FG-OH-2215	Version: 1.0
--	-----------------

Company: WSP	Drawn By: SHEPS	Chk/Prvrd: ASTBD	Drawn Date: 25/07/2023	Status: DRAFT
-----------------	--------------------	---------------------	---------------------------	------------------



Service Layer Credits: Contains OS data © Crown Copyright and database rights 2023
 © Crown copyright and database rights 2023 Ordnance Survey 0100031673

Key

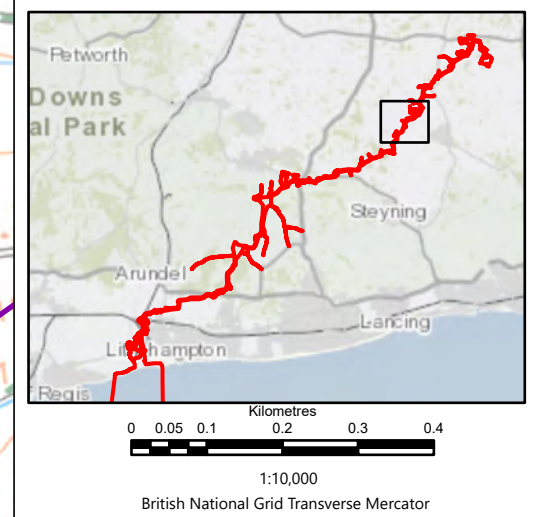
- Proposed DCO Order Limits
- 1km Study Area
- Bolney Substation extension (AIS)
- Bolney Substation extension (GIS)
- Existing National Grid Substation
- Oakendene substation site
- Temporary construction compound
- Trenchless Crossing (TC) compounds
- Trenchless Crossing (TC) compound alternatives
- Trenchless Crossing (TC) limits of deviation

Proposed onshore cable construction corridor

- Indicative trenchless section
- Indicative open cut section

Access from public highway

- ◆ Construction
- ◆ Construction & operational
- ◆ Light construction
- ◆ Light construction & operational
- ◆ Operational
- HER monument record (point)
- HER monument record (line)
- HER monument record (polygon)



Rampion Extension Development



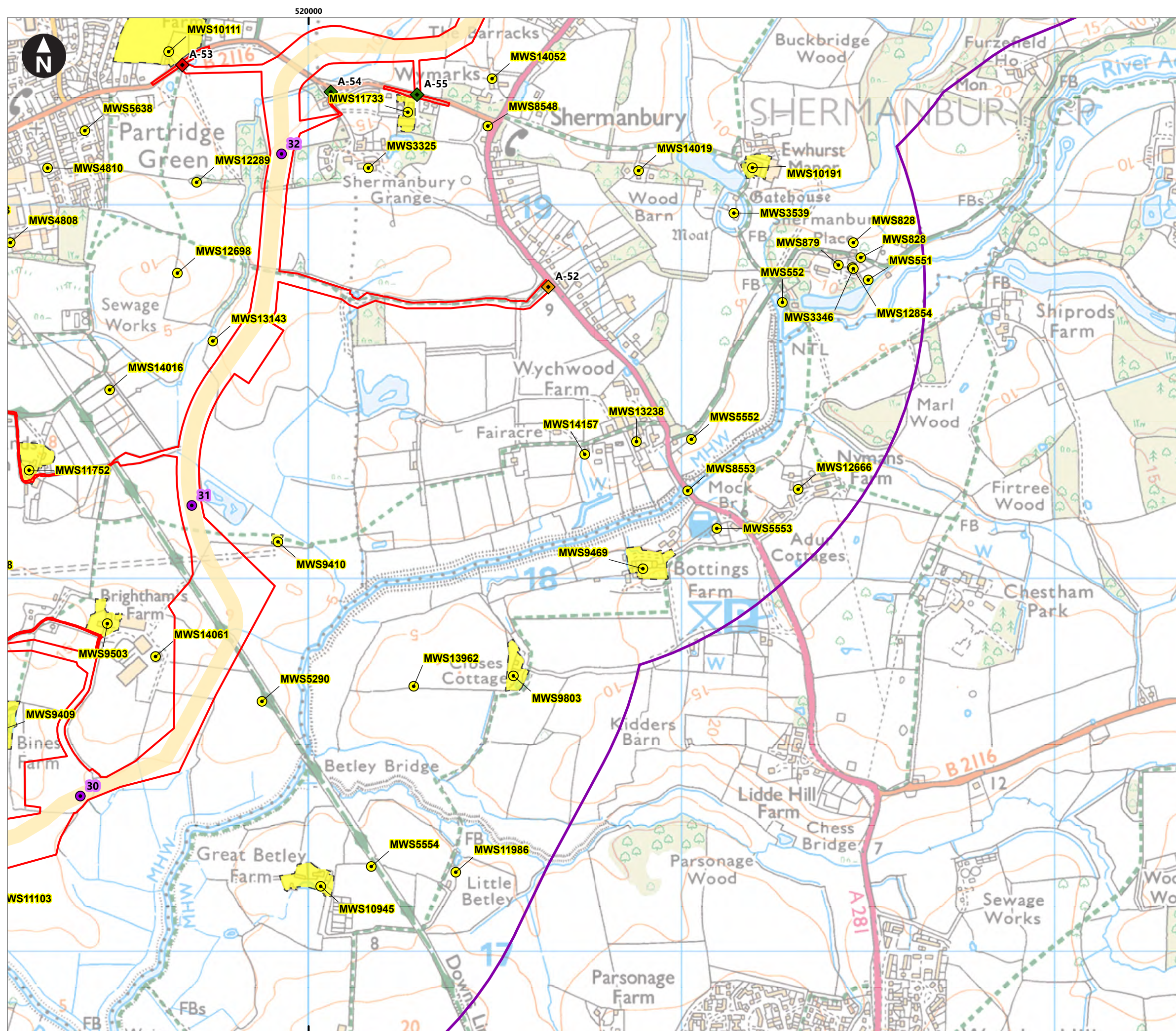
Rampion 2 Offshore Wind Farm

Figure 25.3s HER monument records and UKHO wreck sites

Environmental Statement

System Identifier: 42285-WSPE-ES-ON-FG-OH-2215			Version: 1.0
Company: WSP	Drawn By: SHEPS	Chk/Prvrd: ASTBD	Status: DRAFT

Drawn Date: 25/07/2023



Key

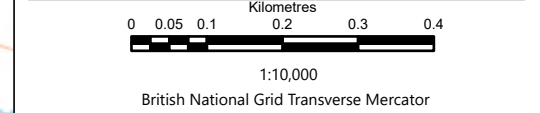
- Proposed DCO Order Limits
- 1km Study Area
- Bolney Substation extension (AIS)
- Bolney Substation extension (GIS)
- Existing National Grid Substation
- Oakdene substation site
- Temporary construction compound
- Trenchless Crossing (TC) compounds
- Trenchless Crossing (TC) compound alternatives
- Trenchless Crossing (TC) limits of deviation

Proposed onshore cable construction corridor

- Indicative trenchless section
- Indicative open cut section

Access from public highway

- ◆ Construction
- ◆ Construction & operational
- ◆ Light construction
- ◆ Light construction & operational
- ◆ Operational
- HER monument record (point)
- HER monument record (line)
- HER monument record (polygon)



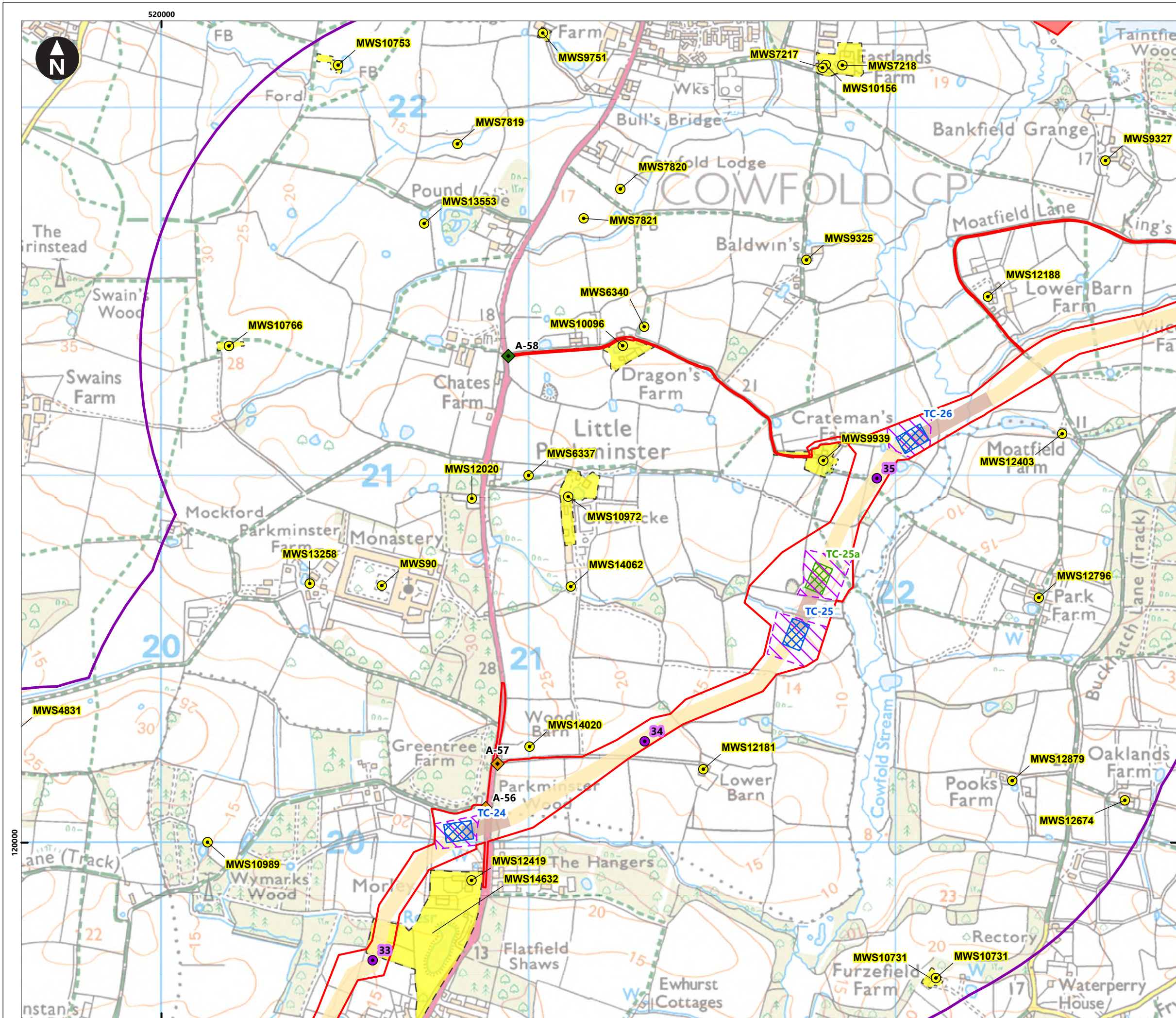
Rampion Extension Development

Rampion 2 Offshore Wind Farm

Figure 25.3t HER monument records and UKHO wreck sites

Environmental Statement

System Identifier: 42285-WSPE-ES-ON-FG-OH-2215		Version: 1.0
Company: WSP	Drawn By: SHEPS	Chk/Prvrd: ASTBD
Drawn Date: 25/07/2023	Status: DRAFT	



Service Layer Credits: Contains OS data © Crown Copyright and database rights 2023
 © Crown copyright and database rights 2023 Ordnance Survey 0100031673

Key

- Proposed DCO Order Limits
- 1km Study Area
- Bolney Substation extension (AIS)
- Bolney Substation extension (GIS)
- Existing National Grid Substation
- Oakendene substation site
- Temporary construction compound
- Trenchless Crossing (TC) compounds
- Trenchless Crossing (TC) compound alternatives
- Trenchless Crossing (TC) limits of deviation

Proposed onshore cable construction corridor

- Indicative trenchless section
- Indicative open cut section

Access from public highway

- Construction
- Construction & operational
- Light construction
- Light construction & operational
- Operational
- HER monument record (point)
- HER monument record (line)
- HER monument record (polygon)

Map of the region showing the project location relative to towns like Arundel, Lancing, and Selsey. Includes a scale bar (0 to 0.4 Kilometres) and projection information: 1:10,000 British National Grid Transverse Mercator.

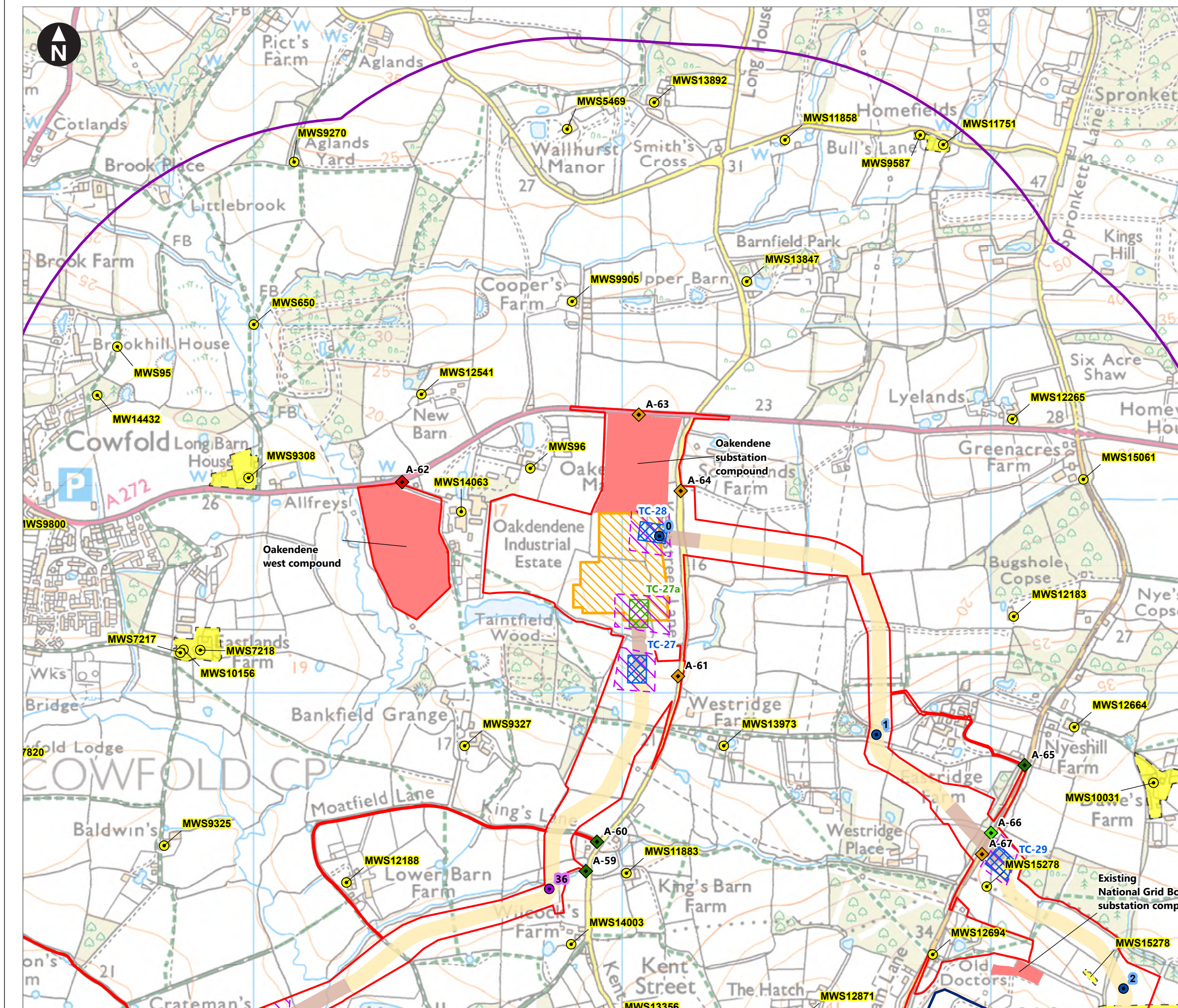
Rampion Extension Development
 Rampion 2 WIND FARM

Rampion 2 Offshore Wind Farm

Figure 25.3v HER monument records and UKHO wreck sites

Environmental Statement

System Identifier: 42285-WSP-ES-ON-FG-OH-2215		Version: 1.0
Company: WSP	Drawn By: SHEPS	Chk/Prvd: ASTBD
Drawn Date: 25/07/2023	Status: DRAFT	



Key

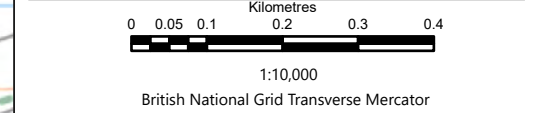
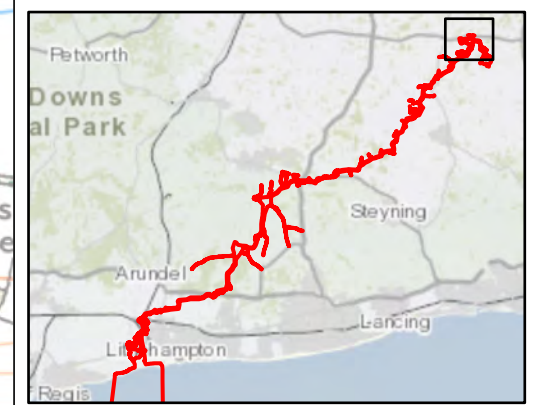
- Proposed DCO Order Limits
- 1km Study Area
- Bolney Substation extension (AIS)
- Bolney Substation extension (GIS)
- Existing National Grid Substation
- Oakdene substation site
- Temporary construction compound
- Trenchless Crossing (TC) compounds
- Trenchless Crossing (TC) compound alternatives
- Trenchless Crossing (TC) limits of deviation

Proposed onshore cable construction corridor

- Indicative trenchless section
- Indicative open cut section

Access from public highway

- ◆ Construction
- ◆ Construction & operational
- ◆ Light construction
- ◆ Light construction & operational
- ◆ Operational
- HER monument record (point)
- HER monument record (line)
- HER monument record (polygon)



Rampion Extension Development

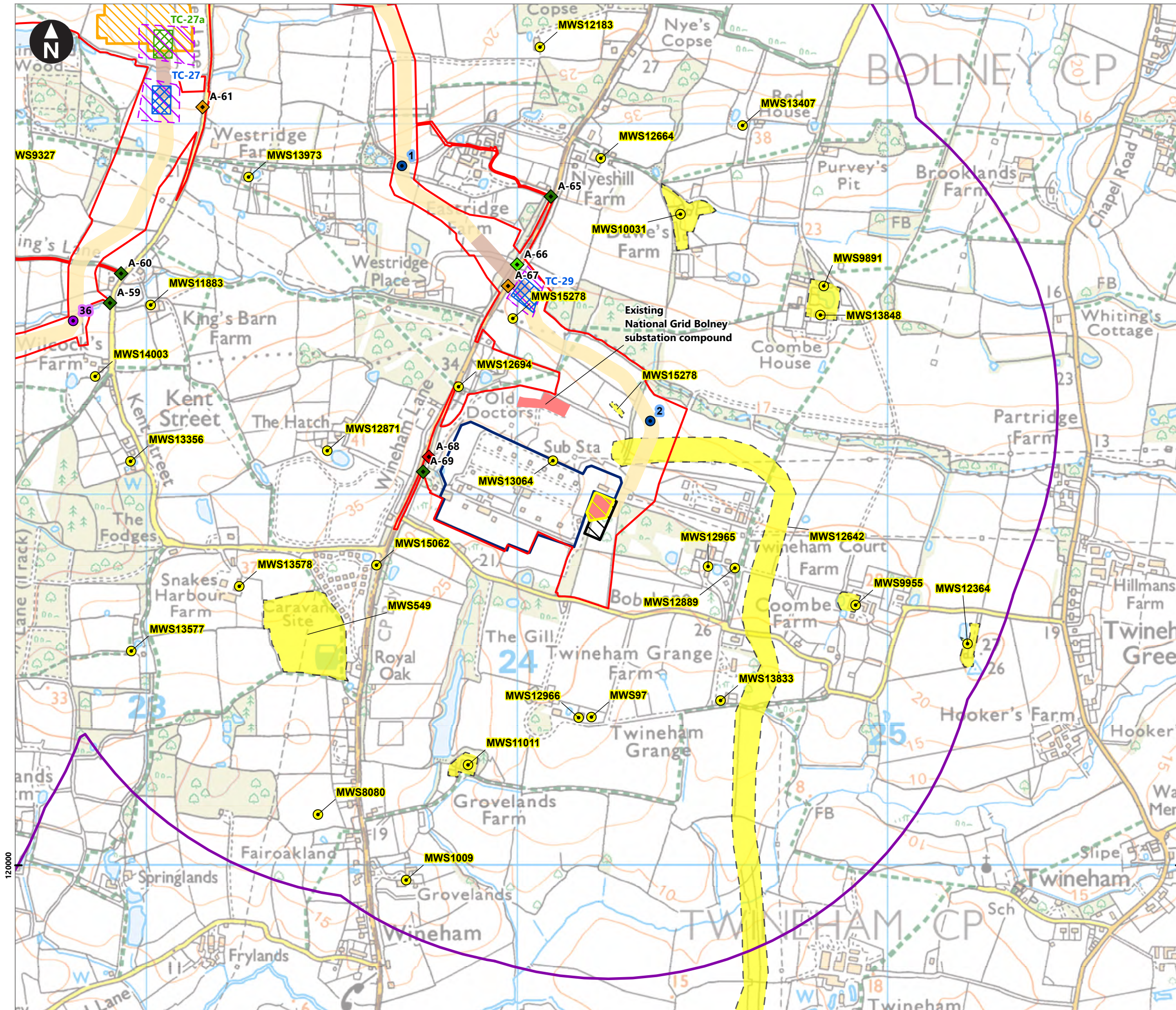
Rampion 2 Offshore Wind Farm

Figure 25.3w HER monument records and UKHO wreck sites

Environmental Statement

System Identifier: 42285-WSP-ES-ON-FG-OH-2215 Version: 1.0

Company: WSP	Drawn By: SHEPS	Chk/Prvd: ASTBD	Drawn Date: 25/07/2023	Status: DRAFT
--------------	-----------------	-----------------	------------------------	---------------



Key

- Proposed DCO Order Limits
- 1km Study Area
- Bolney Substation extension (AIS)
- Bolney Substation extension (GIS)
- Existing National Grid Substation
- Oakendene substation site
- Temporary construction compound
- Trenchless Crossing (TC) compounds
- Trenchless Crossing (TC) compound alternatives
- Trenchless Crossing (TC) limits of deviation

Proposed onshore cable construction corridor

- Indicative trenchless section
- Indicative open cut section

Access from public highway

- ◆ Construction
- ◆ Construction & operational
- ◆ Light construction
- ◆ Light construction & operational
- ◆ Operational
- HER monument record (point)
- HER monument record (line)
- HER monument record (polygon)



0 0.05 0.1 0.2 0.3 0.4
 Kilometres
 1:10,000
 British National Grid Transverse Mercator

Rampion Extension Development

Rampion 2 Offshore Wind Farm

Figure 25.3x HER monument records and UKHO wreck sites

Environmental Statement

System Identifier: 42285-WSPE-ES-ON-FG-OH-2215
 Version: 1.0

Company: WSP	Drawn By: SHEPS	Chk/Prvd: ASTBD	Drawn Date: 25/07/2023	Status: DRAFT
--------------	-----------------	-----------------	------------------------	---------------